



empower

Web Based - empower and Desktop - empower Ver. 1.1



empower features

- ▶ **Compatible Access Control System**
 - ◆ Support application for any access control system
 - ◆ Supports multi locations
 - ◆ Supports unlimited cardholders
- ▶ **Employee Management**
 - ◆ Employee joining details
 - ◆ Employee date of birth
 - ◆ Employee reporting to details
 - ◆ Employee access card details
 - ◆ Employee weekly off details
 - ◆ Employee resignation details
- ▶ **Attendance Management**
 - ◆ Facility to manage attendance of Employee
 - In case of out duty
 - In case of leave
 - In case of mismatch
 - ◆ Attendance Regularization
- ▶ **Shift Management**
 - ◆ Shift definition along with break details
 - ◆ Night shift (day cross shift) definition
 - ◆ Shift rotation
 - ◆ Shift allocation
 - Employee wise
 - Department wise
 - ◆ Flexible Shifts
- ▶ **Leave Management**
 - ◆ Leave definitions with different criteria
 - ◆ Leave administration by Admin / HR
 - ◆ Leave adjustments by Admin / HR
 - ◆ Leave application facility to employees
 - ◆ Online leave application / Online sanction by reporting manager / Online rejection
 - ◆ Leave carry forward
 - ◆ Leave lapse report
 - ◆ Auto generation of mails for each activity (application, sanction & rejection)
- ▶ **Reports**
 - ◆ Master reports
 - ◆ Attendance reports (Attendance status wise)
 - ◆ Attendance muster
 - ◆ Shift allocation
 - ◆ Employee wise attendance report
 - ◆ Leave / Out duty reports
- ▶ **Out Duty Management**
- ▶ **Compensatory Off Management**
- ▶ **Password protected with Super user, HR, Administration and Normal user login.**
- ▶ **Alert system for not swiping the card by which the Employee receives a mail.**
- ▶ **Greet Employee on his/her birthday.**
- ▶ **Implemented with Software lock.**
- ▶ **We also offer the following additional modules**
 - ◆ Interface with SAP
 - ◆ Interface with Payroll system

OEM suppliers for software to
Honeywell Security Group, India and Siemens LLC, U.A.E.

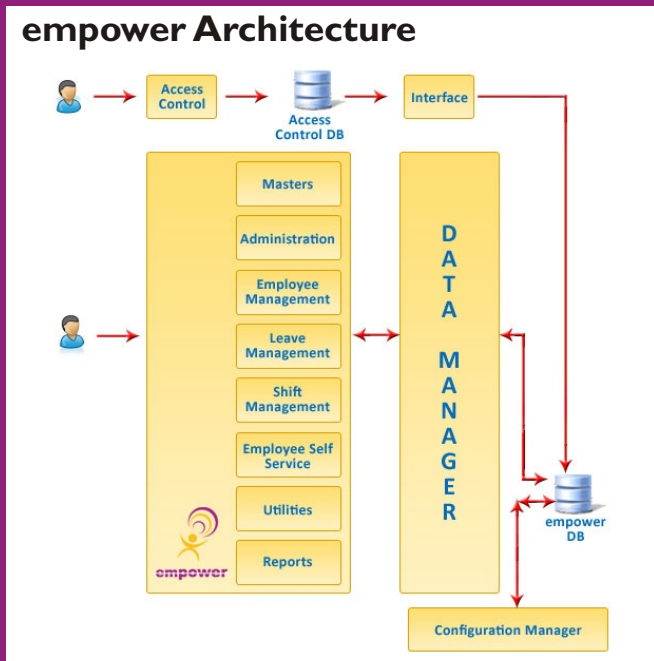
empower system requirement

- **Hardware:**
Pentium 4 with 3.0 GHZ processor, 1 GB RAM, 40 80 GB HDD
- **Software:**
OS Windows NT, Windows 2000 Professional, Windows 2000 Server, Windows XP Professional, Windows 2003 Server with IIS 5.0 or Above, .NET Framework 1.1, .NET Framework 2.0 MSDE, MS SQL Server 2000 with Service Pack 3.0, MS SQL Server 2005 with Service Pack 3.0 MS Office 2000 or above.

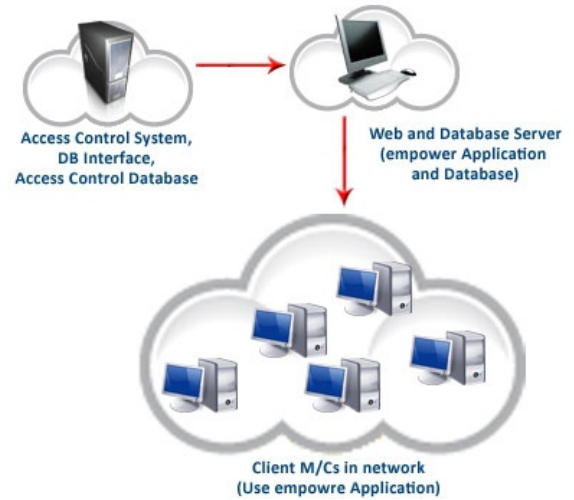
About empower

- empower is a browser based Time Attendance and Leave management system. Primarily it works as a support system for Access Control Systems.
- empower also has a utility to import employee master data and swipe data from various Access Control Systems to its own database.
- It then processes the data and provides attendance and man hour details of all employees, considering leave, out duty and holidays.
- Every employee can view his own attendance and leave details through his own login.

empower Architecture



empower Deployment



Clients in India

- TATA Autocomp Systems Ltd. Pune
- T-Systems India Pvt. Ltd. Pune
- TIBCO India Pvt. Ltd. Pune
- JCB Manufacturing Ltd., Talegaon Pune
- Electronica Machine Tools Pune
- Crest Premedia Pune
- Honeywell Automation India Ltd. Pune
- Honeywell Security Delhi
- Honeywell Automation India Ltd. Delhi
- HeadStrong Solutions Noida
- Hindustan Unilever Limited.
- Xpanxion International Pvt Ltd. Pune
- Whirlpool India Pvt. Ltd. Pune
- Dow Agro Sciences Ltd., Chiplun, Ratnagiri
- Bharati Hospital, Pune
- FunDtech (CashTech) India Ltd., Pune
- Entelechy System, Ghatkopar (eOntime)
- Bharat Sanchar Nigam Ltd., Delhi (eOntime)
- Kores India Ltd., New Mumbai (eOntime)
- Indus Tower, Delhi (eOntime)
- QuisLex Legal Services Pvt. Ltd., Hyderabad (eOntime)
- Synchroon Technologies Pvt. Ltd., Pune (eOntime)

International Clients

- DIFX, Dubai
- Siemens LLC, Dubai
- Megastar LLC, Dubai
- Abu Dhabi Transport Authority, Abu Dhabi
- Globansol, Dubai
- Siemens LLC, Bahrain
- Honeywell, Singapore



SEED Automation Solutions

A Division of SEED Healthcare Solutions
100-B1, Sunit Apartments, Near Telco Club,
Erandawane Prabhat Road, Pune 411004 (India)
Tel: ++91-20-25651178 / 79 Fax: ++91-20-66203648
E-mail: info@seedautomation.com
Website: www.seedautomation.com